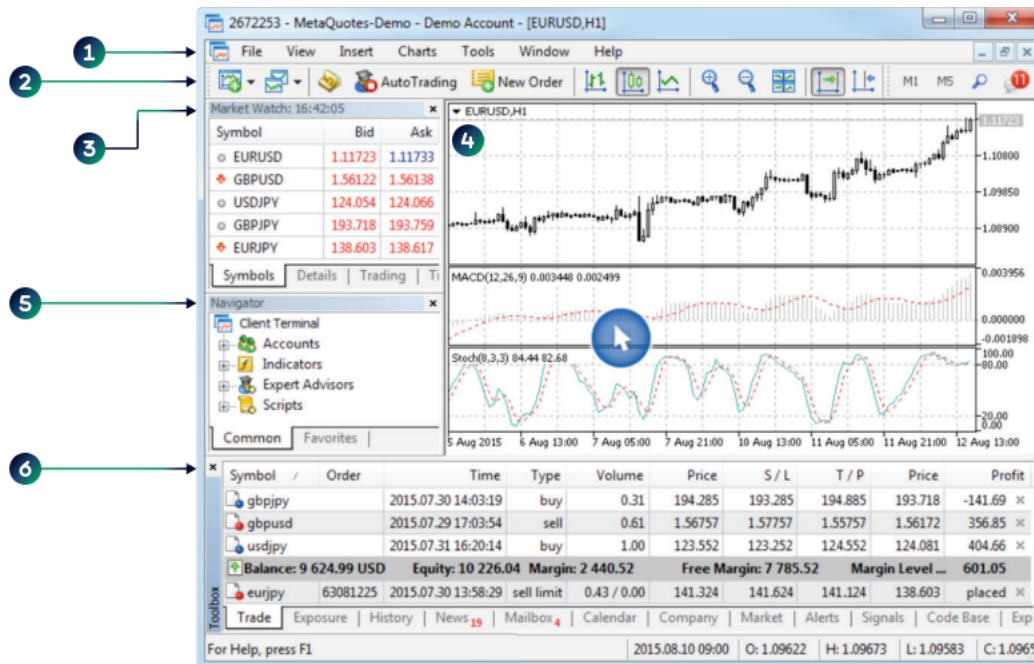




**GETTING
STARTED WITH
MT5**

KEY ELEMENTS OF THE PLATFORM INTERFACE

The platform interface provides access to all the necessary tools for trading in the financial markets. It includes various menus, toolbars, and service windows.


1

MAIN MENU:

The main menu contains almost all the commands and functions that can be executed in the trading platform. It provides access to operations with charts, analytical tools, platform settings and other features. The main menu consists of the following items: File, View, Inset, Charts, Tools, Window, Help

2

TOOLBARS:

The platform has three built-in toolbars: Standard, Line Studies and Periodicity. The toolbars contain duplicated commands and functions of the main menu. However, the toolbars are customizable, and you can add the most frequently used controls there.

3

MARKET WATCH:

The Market Watch window provides access to the price data of financial instruments: prices, statistics and tick charts. Contract specifications and one-click trading features can also be accessed from this window.

4

CHART:

The essence of technical analysis is studying price charts of financial instruments using technical indicators and analytical objects. Charts in the platform have a variety of settings, so that traders can customize them and adapt to their personal needs. Every chart can be displayed with 21 timeframes from one minute (M1) to one month (MN1).

5

NAVIGATOR:

The Navigator allows switching between accounts and provides functions for running trading robots and indicators. It contains a list of applications purchased from the Market and downloaded from the Code Base. From the navigator, users can rent a virtual platform to provide round-the clock operation of Expert Advisors and trading Signals.

6

TOOLBOX:

Toolbox is a multifunctional window that provides functions for working with trade positions, news, account history, alerts, internal mailbox, program logs and expert journals. Additionally, from the Toolbox you can open and modify various orders and manage trade positions.

KEY ELEMENTS OF THE PLATFORM INTERFACE

The trading platform interface is highly customizable. You can choose to display only the tools that you currently need. For example, you can hide Market Watch and Navigator, and show the Depth of Market and Data Window.


1

ACCOUNT CHARTS & DETAILS:

The platform header contains information about the current account number, application name, as well as the active chart name and its timeframe.

2

FAST NAVIGATION BAR:

This bar provides functions for quick chart operations. It allows moving a chart along the time axis, as well as changing its timeframe or the symbol. Double-click and type the required symbol, timeframe, and date.

3

DATA WINDOW:

The data window features accurate price information, as well as currently used indicators and Expert Advisors at the selected point of the chart.

4

SEARCH:

The trading platform provides the smart high-performance Search system to help you find required information in the MQL5.community — a community of traders and MQL5 developers. The MQL5.community resource contains documentation, trading forum, blogs of traders and analysts, as well as articles about programming and terminal use.

5

DEPTH OF MARKET:

The Depth of Market displays information about buy and sell orders for a security at the best prices (closest to the market price). The Depth of Market also includes a tick chart, on which the Time & Sales data of deals is displayed. Deals appear as colored circles. The color shows the direction, the size means the volume of a deal.

6

COMMUNITY CHAT:

Chat with you friends and fellow traders on MQL5, community straight from the trading platform. The chat maintains the history of messages, as well as it features the number of unread messages.